



## Small Diameter Sintered Mesh Filter

---

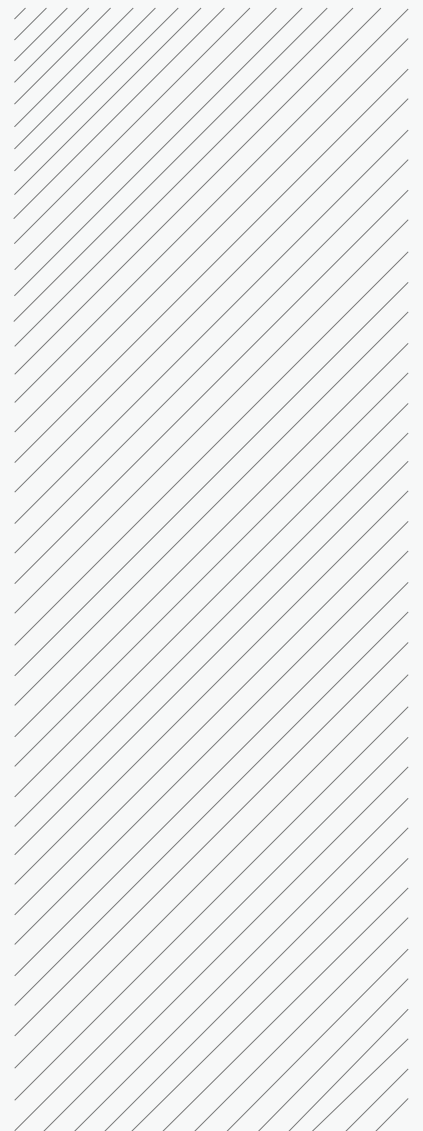
Weave Impossible to Possible



**BOEDON** Industech Limited

[www.boedon.com](http://www.boedon.com) | [sales@boedon.com](mailto:sales@boedon.com)

# BOEDON Brochure



## **Small diameter sintered mesh filters have high strength and high corrosion resistance performance in harsh environments.**

**Small diameter sintered mesh filters** play a vital role in many fields, as they can effectively filter tiny particles and harmful gases from the air, ensuring the normal operation and service life of the equipment. At the same time, sintered mesh filters made using vacuum electron beam welding technology have high strength and corrosion resistance performance, can be used in harsh environments, and the welded parts are still kept in a vacuum state, ensuring the stability and reliability of the equipment.

## **Small Diameter Sintered Mesh Filter**



## SMALL DIAMETER SINTERED MESH FILTER CATALOGUE

## Type



### Model-1

- Material: stainless steel
- Filter body O.D.: 10 mm
- Filter body height: 11 mm
- Total height: 41.2 mm

Filtration accuracy can be customized



### Model-2

- Material: stainless steel
- Filter body O.D.: 14 mm
- Filter body height: 29.5 mm
- Total height: 49.4 mm

Filtration accuracy can be customized



### Model-3

- Material: stainless steel
- Filter body O.D.: 12 mm
- Filter body height: 15.2 mm
- Total height: 41.4 mm

Filtration accuracy can be customized



### Model-4

- Material: stainless steel
- Filter body O.D.: 14 mm
- Filter body height: 11 mm
- Total height: 29.8 mm

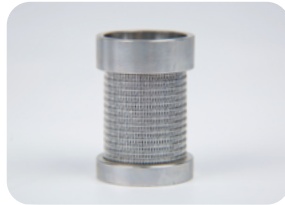
Filtration accuracy can be customized



### Model-5

- Material: stainless steel
- Filter body O.D.: 16 mm
- Filter body height: 10 mm
- Total height: 20.2 mm

Filtration accuracy can be customized



### Model-6

- Material: stainless steel
- Filter body O.D.: 25.3 mm
- Filter body height: 27.3 mm
- Total height: 43.6 mm

Filtration accuracy can be customized



### Model-7

- Material: stainless steel
- Filter body O.D.: 22.5 mm
- Filter body height: 32.2 mm
- Total height: 37.6 mm

Filtration accuracy can be customized



### Model-8

- Material: stainless steel
- Filter body O.D.: 8.5 mm
- Filter body height: 51.5 mm
- Total height: 67.4 mm

Filtration accuracy can be customized

## Vacuum Electron Beam Welding Features

- Good reproducibility
- Small thermal deformation
- Strong penetrating power, and large depth-to-width ratio of the weld
- High weld purity and good joint quality
- No need to add flux in the vacuum welding process, it is not easy to be oxidized

## Application

- **Aviation and aerospace:** aircraft components, jet engine parts, landing gear, etc.
- **Automotive industry:** high-speed gears, torque converter turbine components, cockpit module beams, protection airbags, rear axles, etc.
- **Power and atomic energy:** pressure vessels, fuel rods for plate reactors, turbine nozzles, etc.
- **Electronics and medical:** relay housings, pressure sensors, pacemaker housings, etc.
- **Motor and instrument:** the stator and rotor lamination of the motor and commutator, membrane combinations, etc.
- **Others:** welding of precision parts, welding of micro parts, welding of dissimilar materials, welding of special materials, welding of micro-filter element of valve body.



**BOEDON** Industech Limited

# Weave Impossible to Possible



**E-Mail:** [sales@boedon.com](mailto:sales@boedon.com)

---

[www.boedon.com](http://www.boedon.com)