



Test Sieve

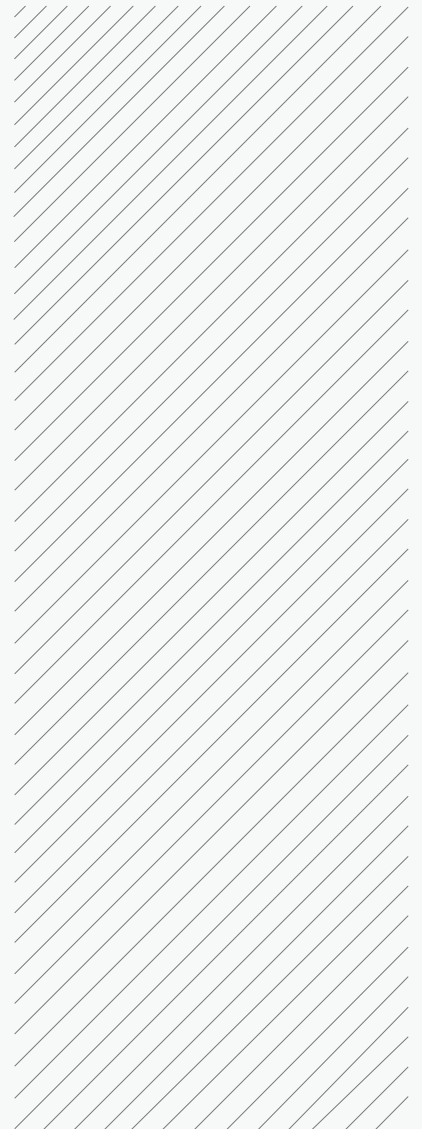
Weave Impossible to Possible



BOEDON Industech Limited

www.boedon.com | sales@boedon.com

BOEDON Brochure

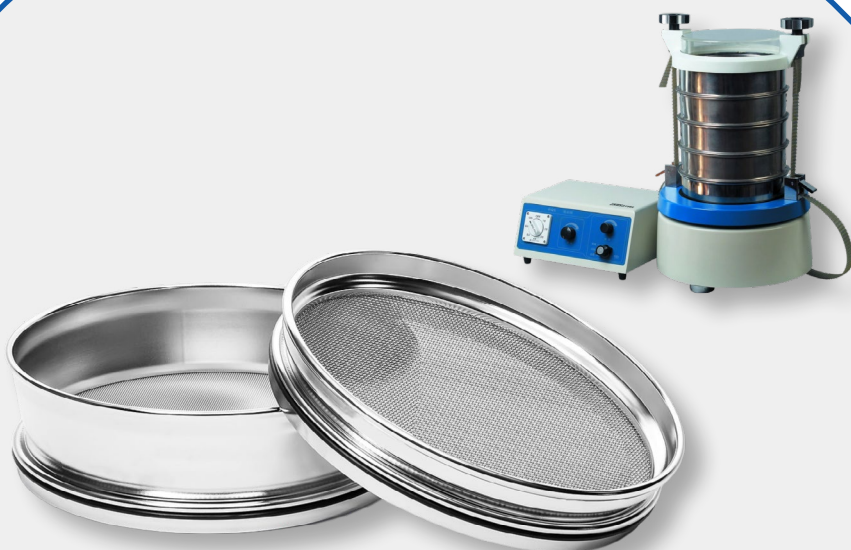


Test sieve reduces labor intensity and improves sample screening quality.

Test sieve is a kind of sieve installed in the automated instrumentation of dispersed screening samples, which can replace the manual screening of samples for particle sizes, greatly reduce labor intensity, and improve the quality of sample screening.

Test sieve is generally divided into slap type and test standard type. The slap sieve, also known as slap type vibrating screen or slap type standard vibrating sieve machine, is applicable to the general abrasive particle size composition check, superhard material production grading, and material composition check. Standard test type sieve, also known as standard experimental sieve, is suitable for accurate screening, filtering, and detection of particle size structure, liquid-like solids content, and amount of impurities of granular and powdery materials.

Test Sieve



Specification

- **Material:** SS304, SS316, and brass
- **Aperture:** 20 μm –125 mm
- **Wire Diameter:** 0.02–8 mm
- **Screen Diameter:** 10–50 cm
- **Screen Height:** 4.5–8.8 cm
- **Screening area:** 33% – 51%

Test Sieve Specification

Item	Aperture		Wire Diameter	Item	Aperture		Wire Diameter
	mm / μm	inch	mm		mm / μm	inch	mm
1	125 mm	5"	8	29	2.36 mm	0.0937"	1
2	106 mm	4.24"	6.3	30	2 mm	0.0787"	0.9
3	100 mm	4"	6.3	31	1.7 mm	0.0661"	0.8
4	90 mm	3.5"	6.3	32	1.4 mm	0.0555"	0.71
5	75 mm	3"	6.3	33	1.18 mm	0.0469"	0.63
6	63 mm	2.5"	5.6	34	1 mm	0.0394"	0.56
7	53 mm	2.12"	5	35	850 μm	0.0331"	0.5
8	50 mm	2"	5	36	710 μm	0.0278"	0.45
9	45 mm	1.75"	4.5	37	600 μm	0.0234"	0.4
10	37.5 mm	1.5"	4.5	38	500 μm	0.0197"	0.315
11	31.5 mm	1.25"	4	39	425 μm	0.0165"	0.28
12	26.5 mm	1.06"	3.55	40	355 μm	0.0139"	0.224
13	25 mm	1"	3.55	41	300 μm	0.0117"	0.2
14	22.4 mm	0.875"	3.55	42	250 μm	0.0098"	0.16
15	19 mm	0.750"	3.15	43	212 μm	0.0083"	0.14
16	16 mm	0.625"	3.15	44	180 μm	0.0070"	0.125
17	13.2 mm	0.530"	2.8	45	150 μm	0.0059"	0.1
18	12.5 mm	0.500"	2.5	46	125 μm	0.0049"	0.09
19	11.2 mm	0.438"	2.5	47	106 μm	0.0041"	0.071
20	9.5 mm	0.375"	2.24	48	90 μm	0.0035"	0.063
21	8 mm	0.312"	2	49	75 μm	0.0029"	0.05
22	6.7 mm	0.265"	1.8	50	63 μm	0.0025"	0.045
23	6.3 mm	0.250"	1.8	51	53 μm	0.0021"	0.036
24	5.6 mm	0.223"	1.6	52	45 μm	0.0017"	0.032
25	4.75 mm	0.187"	1.6	53	38 μm	0.0015"	0.03
26	4 mm	0.157"	1.4	54	32 μm	0.0012"	0.028
27	3.35 mm	0.132"	1.25	55	25 μm	0.0010"	0.025
28	2.8 mm	0.110"	1.12	56	20 μm	0.0008"	0.02

Common Specification of Test Sieve Frame

Item	Diameter		Height	
	cm	mm	cm	inch
1	10	3.937"	4.5	1.772"
2	15	5.905"	5	1.969"
3	20	7.874"	5	1.969"
4	25	9.843"	6	2.362"
5	30	11.811"	6	2.362"
6	40	15.748"	7	2.756"
7	50	19.685"	8.8	3.464"

Features

- Longer service life
- Low maintenance costs
- Precise transmission
- Simple installation & replacement



Food

- Sugar
- Salt
- Soda
- Ajinomoto



Chemical

- Resin sand
- Pigment
- Paint
- Sodium carbonate



Pharmaceutical

- Chinese herbal powder
- Chinese herbal liquid
- Western medicine powder
- Chinese and western medicine granules



Metallurgy

- Titanium oxide
- Zinc oxide
- Electromagnetic material
- Metal powder



Ceramic

- Aluminum oxide
- Quartz sand
- Slurry
- Spray soil particles



BOEDON Industech Limited

Weave Impossible to Possible



E-Mail: sales@boedon.com

www.boedon.com