

Sintered Felt Filter Bag

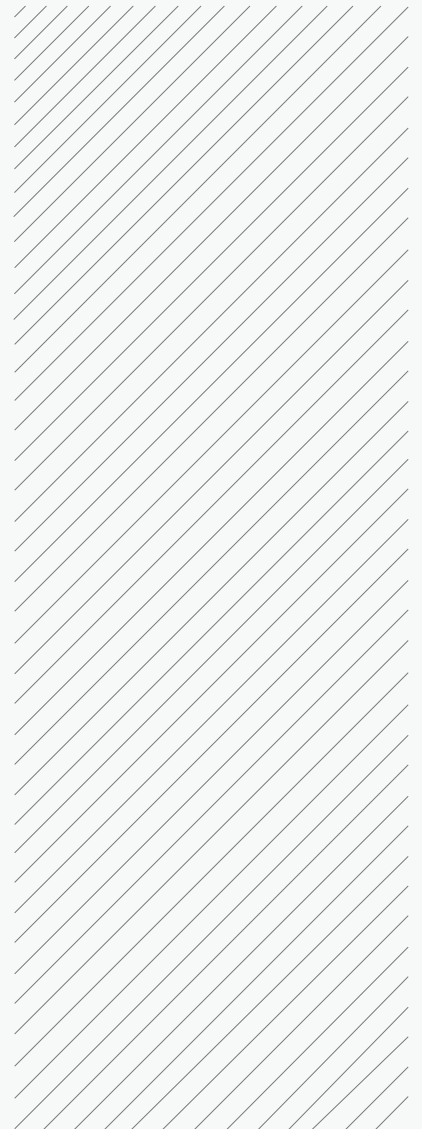
Weave Impossible to Possible



BOEDON Industech Limited

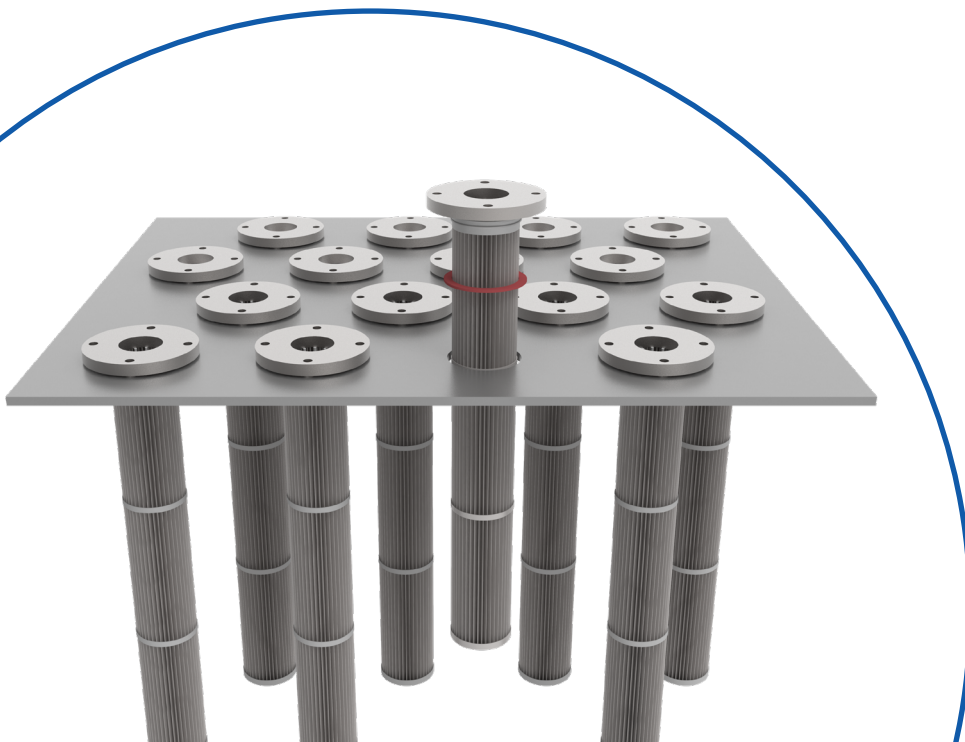
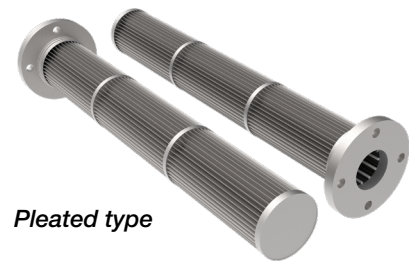
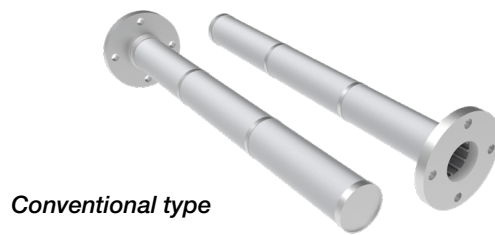
www.boedon.com | sales@boedon.com

BOEDON Brochure



We supply both conventional type and pleated type sintered felt filter bags to meet your demands on high temperature hot gas dust removal.

Sintered felt filter bag is a porous filter bag for depth filtration. It is made of bundle metal fibers by sintering in high temperature and welding after special non-woven laying and stacking with the pore gradient formed by layers of different pore sizes. Our filter media are composed of a metal cage skeleton, coarse metal fiber layer and fine metal fiber layer. It is widely used in various industries involving high temperature flue gas dust removal due to its excellent resistant to high temperature and corrosion.



SINTERED FELT FILTER BAG

Specification

Material: stainless steel (304, 316L, 310S, 314, etc.), FeCr Al

Working temperature: Max. 1000 °C.

Porosity: 75% – 88%

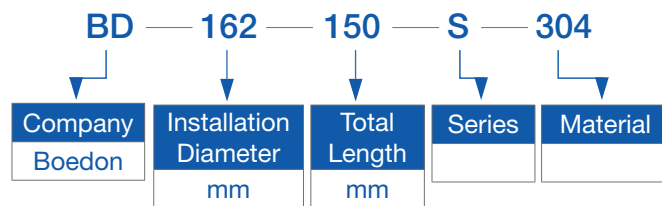
Connection: flange

Initial resistance: 30–100 Pa

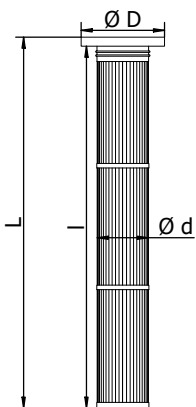
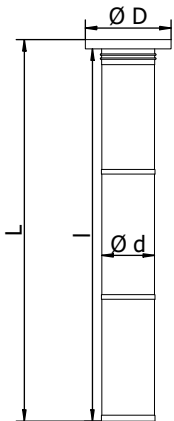
Emission concentration: < 5 mg/Nm³

Cleaning method:

regular cleaning or online pulse cleaning



Popular Specification of Sintered Felt Filter Bags



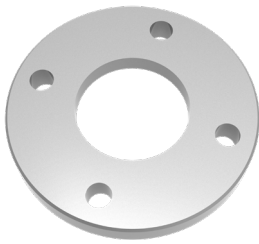
Model	Installation Diameter (mm)	Total Length L (mm)	Length l (mm)	Diameter D (mm)	Diameter d (mm)	Filter Area (m ²)
BD-162-150-S	162	1500	1466	177	143	0.76
BD-162-150-F	162	1500	1466	177	143	2.03
BD-162-75-S	162	750	716	177	143	0.38
BD-162-75-F	162	750	716	177	143	1
BD-162-50-S	162	500	466	177	143	0.25
BD-162-50-F	162	500	466	177	143	0.66
BD-133-150-S	133	1500	1466	153	118	0.62
BD-133-150-F	133	1500	1466	153	118	1.62
BD-133-75-S	133	750	716	153	118	0.31
BD-133-75-F	133	750	716	153	118	0.8
BD-133-50-S	133	500	466	153	118	0.21
BD-133-50-F	133	500	466	153	118	0.53
BD-125-150-S	125	1500	1466	142	108	0.59
BD-125-150-F	125	1500	1466	142	108	1.49
BD-125-75-S	125	750	716	142	108	0.29
BD-125-75-F	125	750	716	142	108	0.73
BD-125-50-S	125	500	466	142	108	0.2
BD-125-50-F	125	500	466	142	108	0.48

Notes:

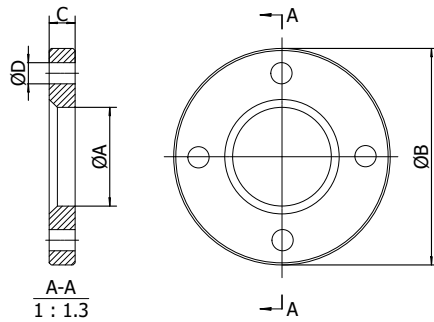
- Installation diameter refers to the diameter for filter installed on the installation plate.
- Other specifications are available upon request.

SINTERED FELT FILTER BAG

Connection



Flange plate



Flange structure plan

Filters are generally provided with a flange for connection to enhance its high temperature and high pressure resistance.

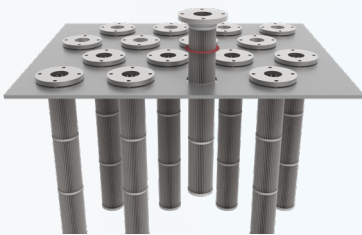
- ϕA (flange ID): 108 mm, 118 mm, 143 mm.
- ϕB (flange OD): 142 mm, 153 mm, 177 mm.
- C (flange thickness): 34 mm
- ϕD (flange hole diameter): 15 mm, 19 mm
- Number of holes: 4
- Special sizes are available upon request.

SINTERED FELT FILTER BAG

Seal Fittings

Seal Gasket

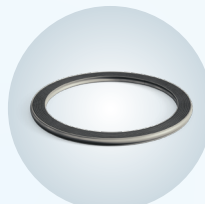
The filter is sealed by tightly compressing the seal gasket onto the back of the flange to the upper surface of the installation plate. The roughness of the upper surface of the installation plate and the fitting surface of the flange shall be well designed to perfectly match with the chosen seal gasket as it directly determines whether the seal is reliable and leak-free.



Flange & seal gasket installation



Metal seal gasket



Semi-metallic seal gasket



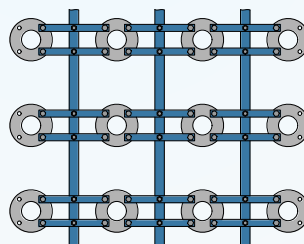
Asbestos rubber seal gasket



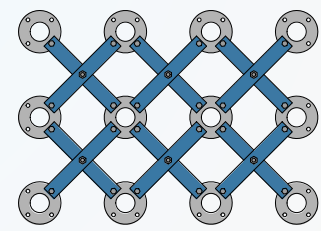
PTFE seal gasket

Hold Down Bar

Hold down bars are the seal fittings between flange holes and the installation plate for fixing. Both parallel and cross hold down bars are available for your option.



Parallel hold down bars



Cross hold-down bars

SINTERED FELT FILTER BAG

Application



Metallurgy

- Submerged arc furnace gas dust removal in iron alloy, ferronickel, silicomanganese industries



Power Plant

- Thermal power plant coal fired boiler dust removal



Cement

- Rotary kiln fuel gas dust removal, etc.



Ceramic

- Aluminum oxide, high titanium slag dust removal



Chemical

- Gas purification and filtration
- Calcium carbide furnace gas dust removal



BOEDON Industech Limited

Weave Impossible to Possible



E-Mail: sales@boedon.com

www.boedon.com